



CONFERENCE & BANQUETING INFORMATION SHEET

LOCATION

Located on Sandton's prestigious Nelson Mandela Square, the DAVINCI Hotel and Suites offers guests all the luxuries and comforts they have come to expect from Legacy's extraordinary portfolio of hotels and resorts. Boasting 166 en-suite hotel rooms, 50 one, two and three bedroom suites and 4 penthouses - the DAVINCI Hotel and Suites has something for every taste. Take time to relax in the gymnasium, infinity edge swimming pool or simply let our therapists pamper you in the wellness spa. Enjoy fine cuisine at Maximillien Restaurant located in Legacy Corner Mall. Situated in the heart of the Sandton business and shopping district, the hotel offers direct access to Legacy Corner Mall, Sandton City Shopping Centre and Nelson Mandela Square, as well as easy access to the Sandton Convention Centre.

GENERAL HOTEL INFORMATION

Number of floors: 16
Guest elevators: 3
Covered and secure parking bays for residents, approximately 140
(2000 additional parking bays available within the Nelson Mandela Square)

ACCOMMODATION

Hotel Rooms

166 hotel rooms comprise the following types:

Standard Rooms	133
Paraplegic Rooms	2
Deluxe Rooms	6
Patio Deluxe Rooms	4
Executive Rooms	16
Junior Suites	5

Kings, twins or interleading rooms are available.

All rooms have en-suite bathrooms with separate showers, LCD televisions, individually controlled air-conditioning, direct dialling telephones and secure undercover parking.

54 Suites and Penthouses comprise the following types:

1 Bedroom Suites	26
2 Bedroom Suites	20
3 Bedroom Suites	4
Penthouses	4

Each suite has a kitchen, open plan lounge and dining area, en-suite bathroom and separate shower, guest toilet, LCD television, DVD player, individually controlled air-conditioning, direct dialling telephone and secure undercover parking.

AMENITIES & SERVICES

- DSTv
- Luxury chauffeur service including transfers to and from the airport
- Electronic safes
- Security with card access system and 24 hour CCTV surveillance
- Same day laundry, dry cleaning and valet service
- Room service: 24 hours a day, 7 days a week
- Gymnasium
- Health hydro and spa
- Complimentary limited internet access for hotel guests
- Outdoor swimming pool
- Direct access to Legacy Corner Mall, Sandton City Shopping Centre and Nelson Mandela Square
- Butler and babysitting services available
- Doctor and dentist on call
- Pre-arrival shopping
- All rooms are fitted with smoke detectors and sprinkler systems

RESTAURANTS AND BARS

DAVINCI Lounge

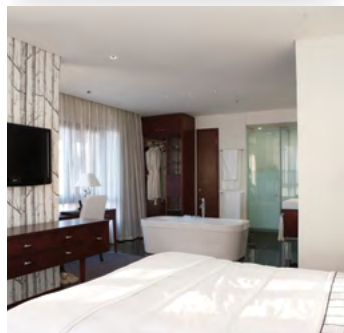
The elegant DAVINCI Lounge is situated in a spectacular setting overlooking the DAVINCI Hotel and Suites pool deck. With natural lighting, wireless internet connection and laptop facilities, it is hard not to enjoy the surrounding contemporary style whilst meeting for business, relaxing with a light meal at any time of the day or enjoying a cocktail in the evening.
Operating hours: 24 hours for hotel guests
Seating capacity: 80 guests

Maximillien Restaurant

Situated in Legacy Corner Mall, guests to the DAVINCI Hotel and Suites will enjoy Euro-Asian Fusion cuisine at Maximillien Restaurant. The restaurant has been designed with expansive windows and an extended deck to afford guests a spacious restaurant with beautiful views of Sandton City life.
Open daily
Hours - Breakfast: 06h30 - 10h30
Hours - Lunch: 12h00 - 14h30
Hours - Dinner: 18h30 - close
Seating capacity: 120 guests

Parc Fermé Restaurant

Parc Fermé Restaurant, Sandton's newest upmarket restaurant in the heart of the CBD, is the very essence of classic meets contemporary. A meeting place for breakfast, lunch and dinner, Parc Fermé Restaurant proves superior when considering the factors that contribute to an outstanding experience. With a stylish and sophisticated atmosphere, aesthetics almost entirely in black and white and cuisine standards of an international calibre, Parc Fermé Restaurant caters to even the most discerning guest. With fresh and unique flavours, the French-Mauritian chef is sure to produce dishes to tantalise your taste buds whether it be a quick lunch you are looking for or a special occasion dinner.
Operating hours: 06h00 - 23h30
Sun - Thurs: 06h00 - 23h30
Fri - Sat: 06h00 - 23h00
Seating capacity: 140 guests





NEARBY ATTRACTIONS

- Legacy Corner Mall
- Marco Polo Gaming Centre (in Legacy Corner)
- Sightseeing tours
- Art Galleries
- Botanical Gardens
- Diamond-cutting works
- Historical Monuments
- Game Parks
- Arts and Crafts
- Mine Museums
- Squash
- Golf
- Tennis
- Bowls
- Polo
- Horse-riding
- Hot Air Ballooning
- Skydiving

CONFERENCE AND BANQUETING

The DAVINCI Hotel and Suites offers the most up-to-date conference rooms and facilities for groups of up to 110 delegates. Our equipment and services ensure that every conference or function held is run smoothly and successfully, satisfying even the most fastidious convention planner.

The main banquet room can be subdivided into two rooms, Leonardo 1 and 2, for conferences, functions, private dining or cocktail parties. In addition, the Mona Lisa boardroom is perfect for smaller conferences or meetings for up to 12 guests. Rooms have independently controlled house lights, wall-to-wall carpeting, natural light and individually controlled air-conditioning.

Audio Visual Equipment includes lectern, P.A. system, laser pointer, flipchart, LCD televisions and built-in sound system. Arrangements can be made for a portable P.A. system, data projector, video projector, single house video projector, multiple slide shows and more. Additional lighting, laser light shows and other options can be discussed when booking your conference or function.

CREDIT CARDS

American Express, Diners Club, Visa and MasterCard

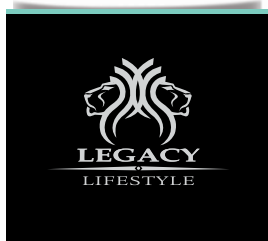
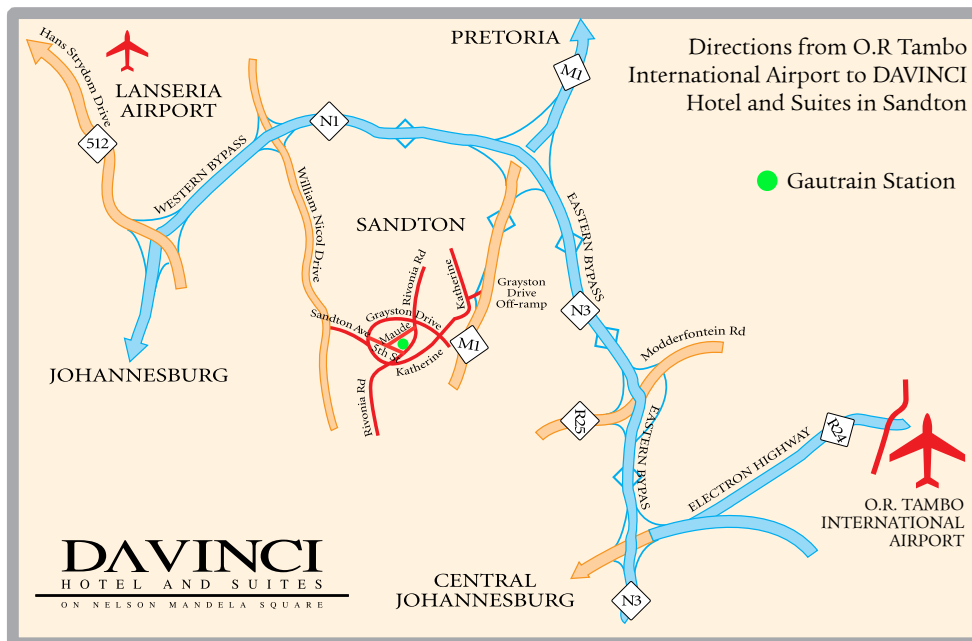
LOCATION MATRIX

OR Tambo International Airport	33 km
City Centre	18 km
Park Railway Station	16 km
Lanseria Airport	25 km
Grand Central Airport	20 km
Sandton Convention Centre	Adjacent
Gallagher Estate Conference Venue	17 km
Gautrain Station	Adjacent (50 m)

		Mona Lisa	Leonardo 1	Leonardo 2
Cinema		-	55	55
School Room		-	35	35
Dinner		-	3	3
U-Shape		-	20	20
Cocktail Reception Standing		-	80	80
Boardroom		12	20	20

GPS COORDINATES

26° 06' 27.04" S
28° 03' 12.79" E



DAVINCI HOTEL AND SUITES
 Corner Maude and 5th Str, Sandton · Private Bag X10059, Sandton, South Africa, 2146
 Tel: +27 (0) 11 292 7000 · Fax: +27 (0) 11 292 7100
 Website: www.legacyhotels.com · E-mail: davinci@legacyhotels.com
 Central Reservations Tel: +27 11 806 6888 · Fax: +27 11 806 6899 · E-mail: hotels@legacyhotels.com

